



Via Vivaio Area



FEATURES:

Property type	Residential
Brokerage	Rent
Surface (sqm)	162
N. local	4
Bedrooms	3
Bathrooms	3
Energy rating	G
Floor	2
Balcony/Terrace	yes
Box	double

DESCRIPTION:

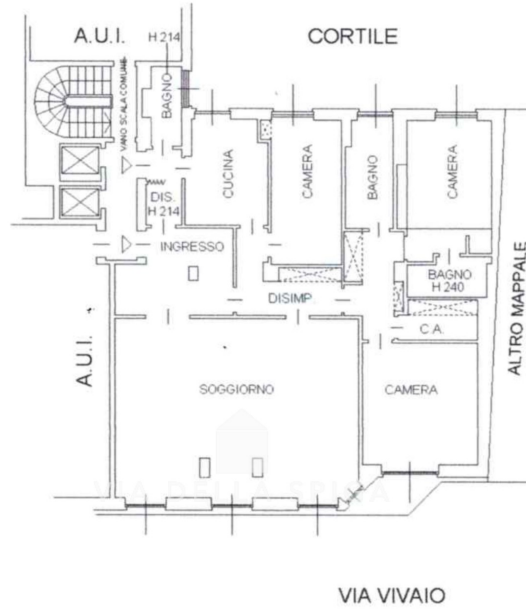
Via Vivaio Area. A stone's throw from the Giuseppe Verdi Conservatory, the Quadrilatero della Moda, in the MM1 San Babila area and connected to Linate with MM4. In elegant building 1965, quiet bright apartment 2° floor, sqm 162. Double entrance, living room with large windows and balcony, furnished kitchen, 3 bedrooms, walk-in closet, 3 bathrooms. Fitted wardrobes. **Double exposure. Renovated.** Cellar. **Double box.** Concierge. Central heating, air conditioning. 4+4 contract. **Annual fee € 52,000 (monthly fee € 4,330) + annual expenses € 8,900 approx. (monthly expenses € 740 approx.).** Box included in the fee. Energy class G.



Frame the QR CODE to view the property on our website



PLANIMETRY 1:



PIANO SECONDO
H 320

