



Viale Beatrice d'Este sqm 130



FEATURES:

Property type	Residential
Brokerage	Sell
Surface (sqm)	130
N. local	4
Bedrooms	3
Bathrooms	2
Energy rating	E
Floor	7
Balcony/Terrace	1

DESCRIPTION:

Viale Beatrice d'Este sqm 130. A few steps from MM3 Porta Romana and Bocconi University, in an elegant 1930s building with concierge, 130 sqm apartment **on the top 7th floor**. Entrance, large living room, kitchen, 2 double bedrooms, one with en suite bathroom, single bedroom, second bathroom, laundry room, **balcony**. **Request €990,000. Annual expenses € 4.000** Possibility to purchase 16m2 underground space. Energy class E.

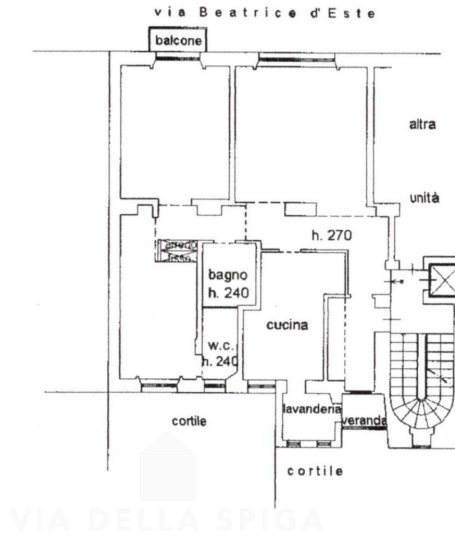


Frame the QR CODE to view the property on our website



PLANIMETRY 1:

PIANO SETTIMO
h. 330



PIANO INTERRATO
h. 280

